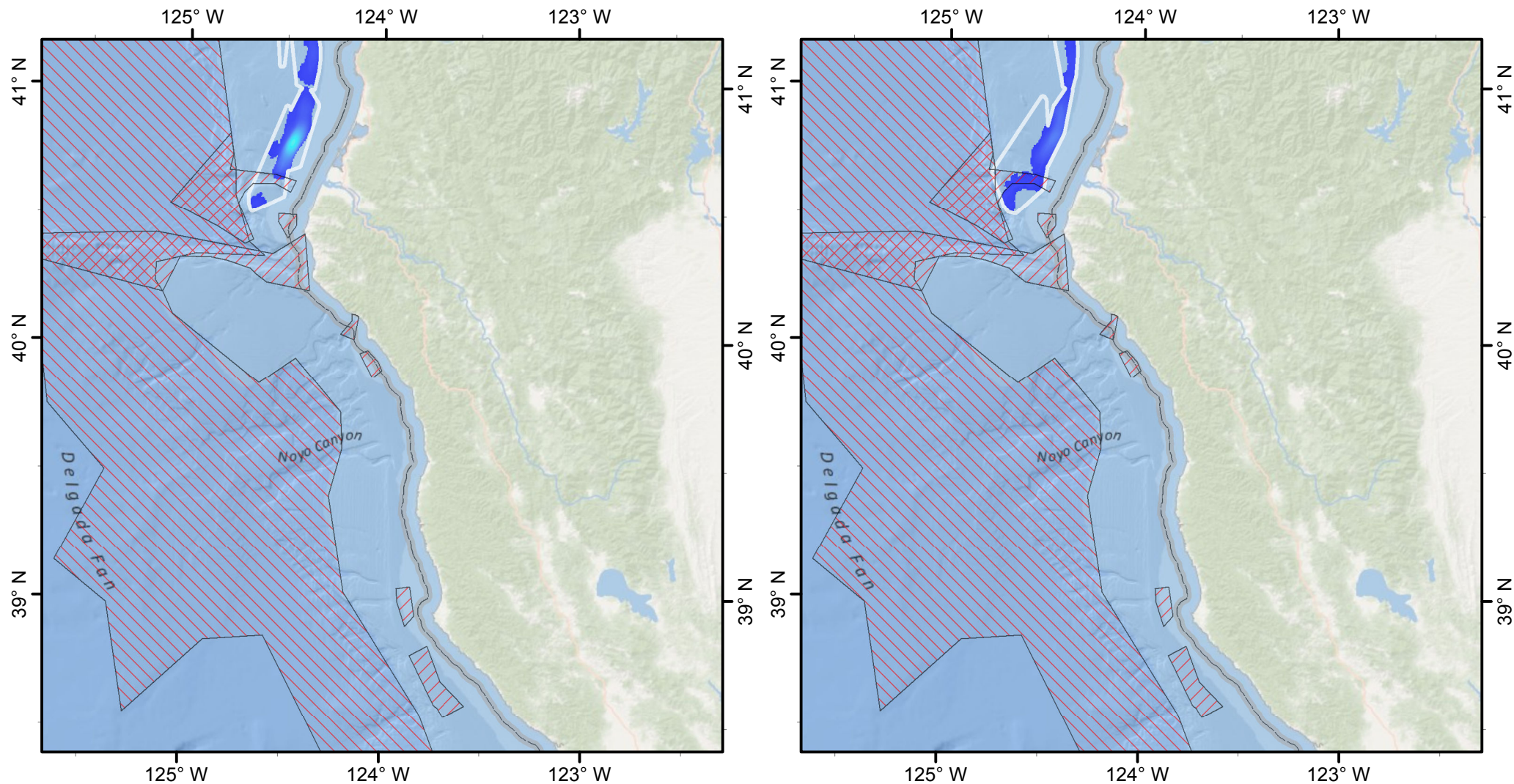
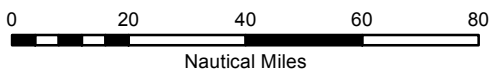
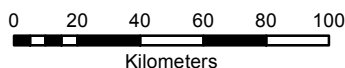


Before **Mid-Water Trawl Fishing Effort (At-Sea & Shoreside Sectors)** After



D2



Map Scale: 1:2,400,000

Date Saved: 20 Aug 2012

Authors: Curt Whitmire & Marlene Bellman (NMFS/NWFSC)

Effort (km/km²)

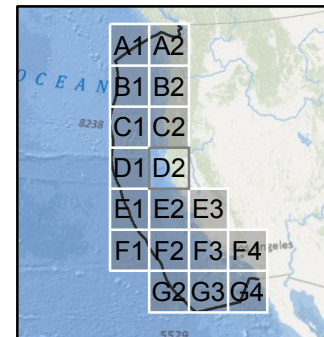
High : 53.669

Low : 0.008

Extent Polygon

EFH Cons. Area

State Territorial Sea



Map 4 of 4

Search Radius: 3,000 m
Cell Size: 500 m